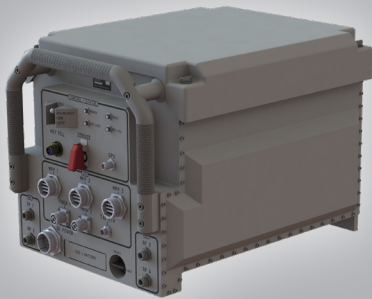
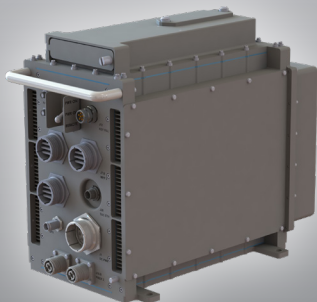


PROTEAN[®]

MULTI-MISSION RF SUITE OF SYSTEMS



Protean 14



Protean 6



Protean 1

Scalable, integrated & networked EW, SIGINT & cyber capabilities for distributed sensing, situational awareness & non-kinetic effects.

Space

Air

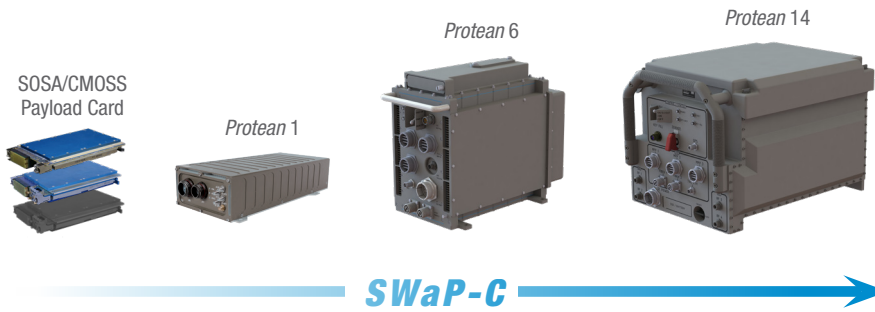
Sea

Ground



PROTEAN®

MULTI-MISSION RF SUITE OF SYSTEMS



The *Protean* suite of systems provide the flexibility to seamlessly accommodate current and emerging capabilities into a platform that provides best-of-breed performance to keep pace with the evolving marketplace and battlespace.

The *Protean* suite of systems are offered in a variety of form factors for various size, weight and power (SWaP) constraints. Each system can be tailored and scaled for mission requirements by swapping out COTS or other standardized cards. The systems and cards we supply are designed in alignment with SOSA and MOSA standards and are compliant with CMOSS.

SPECIFICATIONS

- Input range: 9V to 36V (system/platform dependent)
- Temperature range: -40 °C to +50 °C
- Designed to meet operational requirements in MIL-STD-810 (environmental), MIL-STD-1275 (input power), and MIL-STD-461 (EMI)
- Interfaces:
 - Isolated 1 GbE for command and control
 - Rapid Data transfer over 10 GbE, 100GB and PCIeGen4 over fiber
 - Serial and USB interfaces
 - General Purpose IO

APPLICATIONS

The *Protean* suite of systems provide adaptable multi- and joint-domain operations throughout ground, air, sea, space, and cyberspace operations. They can be configured to platform and mission needs across the conflict continuum to perform singular or multi-function missions such as:

- Assured-PNT
- Counter-Communications
- Counter-Fuze
- Counter-ISR
- Counter-RCIED
- Counter-UAS
- Cyber Over RF
- Deception/Decoy
- Electronic Attack
- Electronic Support Measures
- Navigation Warfare

BENEFITS

- Reduces cost by bringing multiple legacy and next generation capabilities into a modular framework which are integrated into a single multi-mission system
- Integrates capabilities from numerous government and industry sources to achieve requirement objectives while maintaining compliance to open architecture standards
- Open architecture design reduces supply chain overhead and obsolescence risk

FEATURES

- ▶ SOSA and MOSA aligned, CMOSS compliant
- ▶ Tailorable and scalable to defend against current and future threats
- ▶ Agile RF capabilities
- ▶ Native support for Government open architecture frameworks
- ▶ Rapid capability insertion through swappable cards
- ▶ Integrates onto dismantled, mobile (ground based or airborne), and fixed site platforms
- ▶ Various SWaP profiles to meet mission constraints and needs



800-724-0451 • inquiries@srcinc.com • www.srcinc.com

Scan QR code to download an electronic copy.

© 2023 SRC, Inc. All rights reserved. 20231219

